




















ST
D

Worklist: 4497

<u>LAB CASE</u>	<u>ITEM</u>	<u>ITEM TYPE</u>	<u>DESCRIPTION</u>	
M2020-2310	3	UCK	AM 25/AM 26 Urine MultiDrug/THC Screen by LC-QQQ	
M2020-2828	2	UCK	AM 25/AM 26 Urine MultiDrug/THC Screen by LC-QQQ	
M2020-2985	3	UCK	AM 25/AM 26 Urine MultiDrug/THC Screen by LC-QQQ	
M2020-3044	3	UCK	AM 25/AM 26 Urine MultiDrug/THC Screen by LC-QQQ	
M2020-3076	1	UCK	AM 25/AM 26 Urine MultiDrug/THC Screen by LC-QQQ	
M2020-3227	2	UCK	AM 25/AM 26 Urine MultiDrug/THC Screen by LC-QQQ	
M2020-3248	2	UCK	AM 25/AM 26 Urine MultiDrug/THC Screen by LC-QQQ	
M2020-3382	3	UCK	AM 25/AM 26 Urine MultiDrug/THC Screen by LC-QQQ	
P2020-2313	1	UCK	AM 25/AM 26 Urine MultiDrug/THC Screen by LC-QQQ	
P2020-2316	2	UCK	AM 25/AM 26 Urine MultiDrug/THC Screen by LC-QQQ	
P2020-2379	1	UCK	AM 25/AM 26 Urine MultiDrug/THC Screen by LC-QQQ	
P2020-2471	1	UCK	AM 25/AM 26 Urine MultiDrug/THC Screen by LC-QQQ	
P2020-2488	1	UCK	AM 25/AM 26 Urine MultiDrug/THC Screen by LC-QQQ	
P2020-2491	1	UCK	AM 25/AM 26 Urine MultiDrug/THC Screen by LC-QQQ	
P2020-2507	1	UCK	AM 25/AM 26 Urine MultiDrug/THC Screen by LC-QQQ	
P2020-2534	1	UCK	AM 25/AM 26 Urine MultiDrug/THC Screen by LC-QQQ	
P2020-2623	2	UCK	AM 25/AM 26 Urine MultiDrug/THC Screen by LC-QQQ	
P2020-2626	1	UCK	AM 25/AM 26 Urine MultiDrug/THC Screen by LC-QQQ	
P2020-2627	1	UCK	AM 25/AM 26 Urine MultiDrug/THC Screen by LC-QQQ	

AM# 25: Multi-Drug Screen in Blood and Urine by LC-MS/MS

Extraction Date: 09/01/20
Plate lot#: IDP-107-2-200511

Analyst: Sarah Pickle
Plate Expiration: 11/11/2020

Mobile phase A: 10mM Amm Form
Instant Buffer I

Mobile phase B: 0.1% Formic Acid in MeOH
Ethyl Acetate LC Methanol

Blank Blood Lot: Hemostat 445283-4

Column: Phenomenex Phenyl Hexyl (4.6x50mm, 2.6um)

Blank Urine Lot: POCO31319

LCMS-QQQ ID: 069901

Pre-Analytic:

- 1. Check levels of mobile phases and needle wash refill as needed. Ensure waste is not full.
- 2. Ensure correct column is installed and begin mobile phase flow allow to equilibrate ~ 30 minutes.

Analytic:

- 1. Remove standards, plate, controls, and samples from cold storage. Allow to reach room temperature.
- 2. Urine Hydrolysis: In blank well, add 250µL urine, 40µL BG Turbo, and 100µL Instant Buffer I. Place on plate shaker for 5 minutes.
- 3. Using a calibrated pipette, pipette **250µL blood and urine** (if applicable) into wells of analytical (standards) plate.
Pipette ID: #16
- 4. Place on shaking incubator at ambient temp., 900rpm for 15 minutes.
- 5. Pipette **250µL 0.5 M ammonium hydroxide** in wells of analytical plate.
- 6. Place on shaking incubator at ambient temp., 900rpm for 15 minutes.
- 7. Transfer **200-450µL of blood+base and urine+base (if applicable)** mixture to corresponding wells of SLE+ plate.
Amount transferred: 300 uL
- 8. Apply positive pressure for approx. 10-15 seconds (or until no liquid remains on top of sorbent).
(Load at 85-100 PSI- Selector to the right).
- 9. Wait 5 minutes.
- 10. Add **900uL ethyl acetate**.
- 11. Wait 5 minutes.
- 12. Apply positive pressure for approx. 15 seconds. *(10-15 PSI- Selector to the left).*
- 13. Add **900uL ethyl acetate**.
- 14. Wait 5 minutes.
- 15. Apply positive pressure for approx. 15 seconds. *(10-15 PSI- Selector to the left).*
- 16. Remove plate containing eluate. Place on SPE Dry and evaporate to dryness at approx. 35°C. If run contains urine, add 50µL 1% HCl in MeOH to wells and place plate cover on plate before drying.
- 17. Reconstitute in **100µL 20% LC MeOH** and heat seal plate with foil. Place in autosampler and run worklist.

Post-Analytic

- 1. Open quantitation software and create a new quantitation batch.
- 2. Make necessary changes to integration limits
- 3. Evaluate samples, S/N of primary transition >5 and S/N of secondary transition >3 or evaluation of peak symmetry and resolution. Within +/- 2% or 0.1 min RT of administrative control. Calculated concentration of 5 or greater or 2-5 for discretionary range.
- 4. Did all QCs pass for each analyte? If no, describe issue in comments (below).
- 5. Central File Packet to include: LIMS Worklist, Method Checklist, Calibration and Control Reports

COMMENTS: *Hands of the analyst Sophie Jackson*

SJ

P



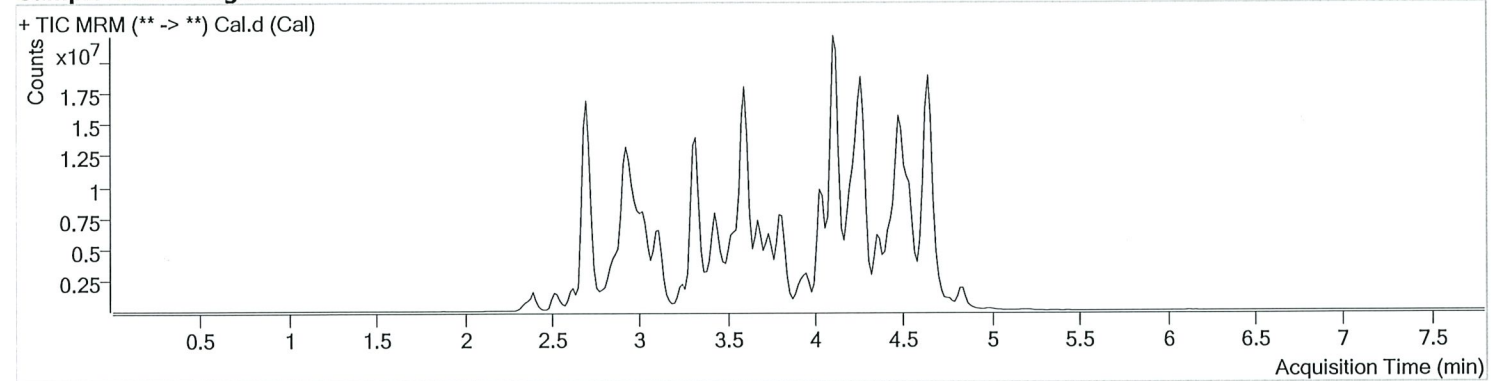
AM #25 Multi-Drug Screen Results

Batch results D:\MassHunter\Data\2020\AM 25-26\090120 AM 25 26 SJ SP\QuantResults\AM 25.batch.bin
Calibration Last Update 9/4/2020 12:41:43 PM

Instrument	Falco	Data File	Cal.d
Type	Cal	Sample	Cal
Acq. Method	AM 25 061720.m	Operator	Sarah Pickle
Sample Position	P5-B1	Comment	
Injection Volume	5		
Acq. Date-Time	9/1/2020 7:10:32 PM		

Sample Info.

Sample Chromatogram



Name	RT	Resp.	S/N	S/N	ISTD Resp.	Calc. Conc.
6-MAM	2.938	83704	394.41	3210.25	2168084	10.0000
7-aminoclonazepam	3.600	1963370	528.08	218.21	7757463	10.0000
7-aminoflunitrazepam	3.799	3435033	760.65	270.37	7757463	10.0000
Acetyl Fentanyl	3.872	96716	22.14	142.32	35873524	10.0000
Acetyl Norfentanyl	2.901	424836	∞	∞	35873524	10.0000
a-hydroxyalprazolam	4.500	568774	237.58	368.99	7757463	10.0000
alpha-hydroxymidazolam	4.591	3542959	3669.21	1268535.09	7757463	10.0000
Alpha-PHP	3.834	2690337	391.69	∞	35873524	10.0000
alpha-PVP	3.559	4519980	170.36	∞	5876604	10.0000
Alprazolam	4.626	4312412	∞	∞	35885725	10.0000
Amitriptyline	4.446	373415	11.90	∞	1099355	10.0000
Amphetamine	2.875	2524046	643.20	476.53	5876604	10.0000
Benzoylcegonine	3.385	1720521	6162.71	∞	802968	10.0000
Brompheniramine	4.057	32591	3059.82	∞	26394125	10.0000
Buprenorphine	4.465	246863	315.02	15098.40	1113672	10.0000
Bupropion	3.758	3357731	583.38	398.44	12323517	10.0000
Carbamazepine	4.219	15230495	5841.96	∞	1616363	10.0000
Carisoprodol	4.202	2049076	230410.48	249.88	11770674	10.0000
Chlordiazepoxide	4.704	1417493	192.26	∞	35885725	10.0000
Chlorpheniramine	3.969	9408	6.66	2532.22	26394125	10.0000
Citalopram	4.071	1721771	727.22	255.86	26394125	10.0000
Clomipramine	4.640	400923	∞	21.80	26394125	10.0000
Clonazepam	4.410	3485697	5366.88	812824.15	35885725	10.0000
Clonazolam	4.360	2478613	607.23	3021.04	35885725	10.0000
Cocacethylene	3.811	6328137	800.73	678.08	35604985	10.0000
Cocaine	3.598	7241424	∞	8878.64	35604985	10.0000
Codeine	2.851	605516	183047.00	∞	14836888	10.0000
Cyclobenzaprine	4.370	427954	161.69	24.37	1099355	10.0000
Desipramine	4.386	627828	171.97	151.82	1099355	10.0000
Dextromethorphan	4.109	695518	122918.72	157532.91	3734681	10.0000
Dextrorphan	3.403	3013262	414690.52	596.64	3734681	10.0000
Diazepam	4.843	3023658	∞	∞	35885725	10.0000
Dihydrocodeine	2.789	1465962	1341.92	∞	14836888	10.0000
Diphenhydramine	4.048	3135826	532846.88	1417.99	26394125	10.0000

Cal

AM #25 Multi-Drug Screen Results



Name	RT	Resp.	S/N	S/N	ISTD Resp.	Calc. Conc.
Doxepin	4.153	393541	50.13	52.36	9599198	10.0000
Doxylamine	3.678	11621806	∞	283.70	3734681	10.0000
EDDP	4.123	4229974	∞	1705.10	2374455	10.0000
Estazolam	4.536	12094118	9494.53	423415.51	35885725	10.0000
Etizolam	4.652	554076	1568.06	2307317.79	35885725	10.0000
Fentanyl	4.101	45718	17.36	15468.15	2896231	10.0000
Flualprazolam	4.500	1557513	823.29	5512.95	35885725	10.0000
Flunitrazepam	4.549	5776029	∞	728.94	35885725	10.0000
Fluoxetine	4.319	312384	30184.94	∞	840500	10.0000
Flurazepam	4.191	1416373	263407.51	153.76	35885725	10.0000
Hydrocodone	3.048	2204167	∞	226.73	14836888	10.0000
Hydromorphone	2.518	1980372	258.03	62.20	292657	10.0000
Imipramine	4.399	879561	1117.21	573.81	1099355	10.0000
Ketamine	3.482	5085351	∞	∞	18378955	10.0000
Lamotrigine	3.556	451959	∞	16277.05	26394125	10.0000
Levamisole	2.993	4089312	21669.77	663.25	35604985	10.0000
Levetiracetam	2.629	1751257	420.65	∞	26394125	10.0000
Lorazepam	4.409	1170981	∞	∞	35885725	10.0000
Maprotiline	4.446	399258	∞	∞	1099355	10.0000
MDA	3.010	1895957	1028.00	∞	14893875	10.0000
MDEA	3.253	3750891	∞	988.38	14893875	10.0000
MDMA	3.101	4715821	∞	∞	14893875	10.0000
Meperidine	3.603	2033025	∞	∞	3734681	10.0000
Meprobamate	3.637	855849	115183.15	113.74	11770674	10.0000
Methadone	4.411	1982434	849.68	∞	2374455	10.0000
Methamphetamine	2.995	2902720	∞	2345.89	14893875	10.0000
Methocarbamol	3.558	722918	∞	∞	2374455	10.0000
Methylphenidate	3.528	8199139	∞	329.09	13068176	10.0000
Metoprolol	3.448	741329	345.58	641.32	3734681	10.0000
Midazolam	4.760	1067850	812.19	110.15	35885725	10.0000
Mirtazapine	3.924	2016136	∞	∞	3734681	10.0000
Mitragynine	4.206	130544	∞	310134.38	3734681	10.0000
Morphine	2.351	418817	8.65	3209.36	292657	10.0000
Norbuprenorphine	3.853	31046	152.74	23654.93	1113672	10.0000
Nordiazepam	4.677	2911311	∞	601.72	35885725	10.0000
Norfentanyl	3.329	8096732	759.52	1298.43	35873524	10.0000
Norhydrocodone	2.944	49575	22.24	22.41	292657	10.0000
Norketamine	3.544	756410	∞	465.14	18378955	10.0000
Normeperidine	3.605	1360875	457.43	188.88	26394125	10.0000
Noroxycodone	2.896	2332012	394.28	∞	18378955	10.0000
Nortriptyline	4.433	209102	647.40	25.17	1099355	10.0000
O-desmethyl-tramadol	2.915	11787079	∞	∞	26394125	10.0000
Olanzapine	3.827	163202	682.45	101.96	1616363	10.0000
Oxazepam	4.490	5084921	1261.45	807.45	30452256	10.0000
Oxycodone	2.939	3941698	703.87	1137.02	18378955	10.0000
Oxymorphone	2.393	2854751	1725.83	126.77	292657	10.0000
Paroxetine	4.346	53722	34.05	42.50	840500	10.0000
Phenazepam	4.621	4708556	936507.34	1320.26	35885725	10.0000
Phencyclidine	3.957	2994704	285236.36	651.62	3734681	10.0000
Phentermine	3.133	912802	∞	∞	13068176	10.0000
Phenytoin	4.111	2757346	1492598.51	2922.89	1616363	10.0000
Promethazine	4.337	1094905	1373.69	39.43	26394125	10.0000
Pseudoephedrine	2.705	47494752	9043.51	76943.93	14893875	10.0000
Quetiapine	4.421	1929254	493.96	809.24	51019686	10.0000
Sertraline	4.565	151768	14002.51	80.84	840500	10.0000
Sufentanil	4.405	30747	221.76	19.51	35873524	10.0000
Tapentadol	3.438	5558628	803.85	3438.51	18378955	10.0000
Temazepam	4.658	7488449	1203.59	∞	35885725	10.0000
Tramadol	3.433	12064114	2072.03	92.15	26394125	10.0000
Trazodone	4.498	2094088	2965358.98	257.04	9599198	10.0000

Cal

AM #25 Multi-Drug Screen Results



Name	RT	Resp.	S/N	S/N	ISTD Resp.	Calc. Conc.
Venlafaxine	3.799	6902983	∞	356.90	840500	10.0000
Zaleplon	4.351	6698496	1872788.38	∞	51019686	10.0000
Zolpidem	4.274	13714512	32734.65	1560.18	51019686	10.0000
Zopiclone	4.099	278038	149689.65	26050.79	1515261	10.0000

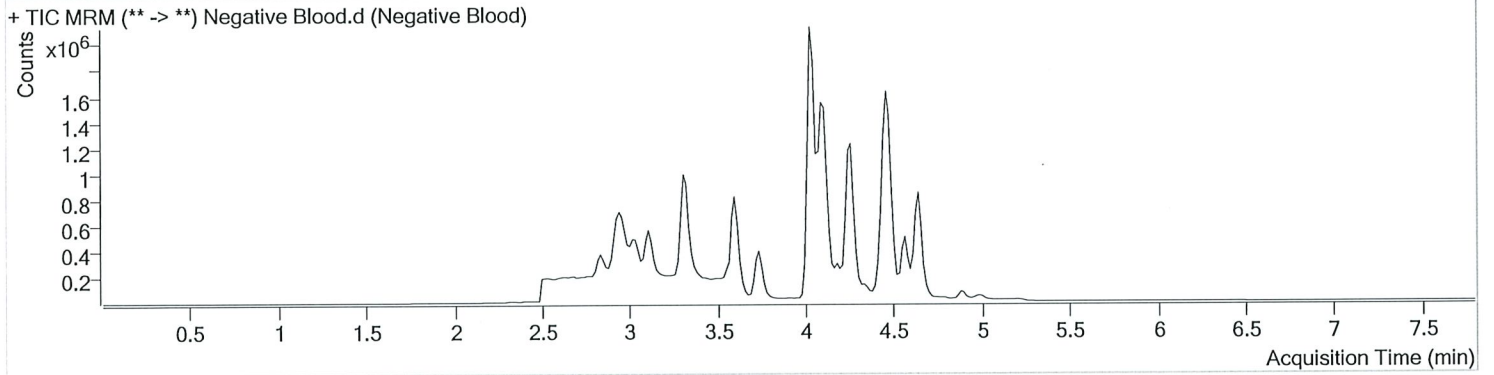


AM #25 Multi-Drug Screen Results

Batch results D:\MassHunter\Data\2020\AM 25-26\090120 AM 25 26 SJ SP\QuantResults\AM 25.batch.bin
Calibration Last Update 9/4/2020 12:41:43 PM

Instrument Type	Falco Sample	Data File	Negative Blood.d
Acq. Method	AM 25 061720.m	Sample	Negative Blood
Sample Position	P5-A2	Operator	Sarah Pickle
Injection Volume	5	Comment	
Acq. Date-Time	9/1/2020 7:19:03 PM		
Sample Info.			

Sample Chromatogram





Idaho State Police Forensic Services

B
P

AM #25 Blood and Urine Multi-Drug Screen by LCMS-QQQ And AM #28 Urine Multi-Drug Confirmatory Analysis by LCMS-QQQ—Panel 1

Methanol External Control Solution (Lot: 031820)
100 ul of 1mg/mL stock was added to each drug to 9700 ul of LC MeOH.

<i>Component</i>	<i>Source</i>	<i>Source Lot Number</i>	<i>Expiration Date</i>
Methanol (LCMS)	Fisher	193068	
O-desmethyl Tramadol	Cerilliant	FN01241702	04/30/2022
Amphetamine	Cerilliant	FE04061701	06/30/2022
Alprazolam	Cerilliant	FE07061604	07/31/2021
Prepared: 03/18/20			
Prepared By: Sarah Pickle			
Expires: 03/18/21			

Urine External Control Solution (Lot: WS052220)
200 ul of methanol external control solution was added to 9800 ul of urine.
Approximately 100ng/mL of each compound.

<i>Component</i>	<i>Source</i>	<i>Source Lot Number</i>
Negative Urine	Pocatello Lab	POC031319
Methanol External Control Solution		031820
Prepared:	05/22/20	
Prepared by:	Celena Shrum	
Expires:	03/18/21	

SJ
P

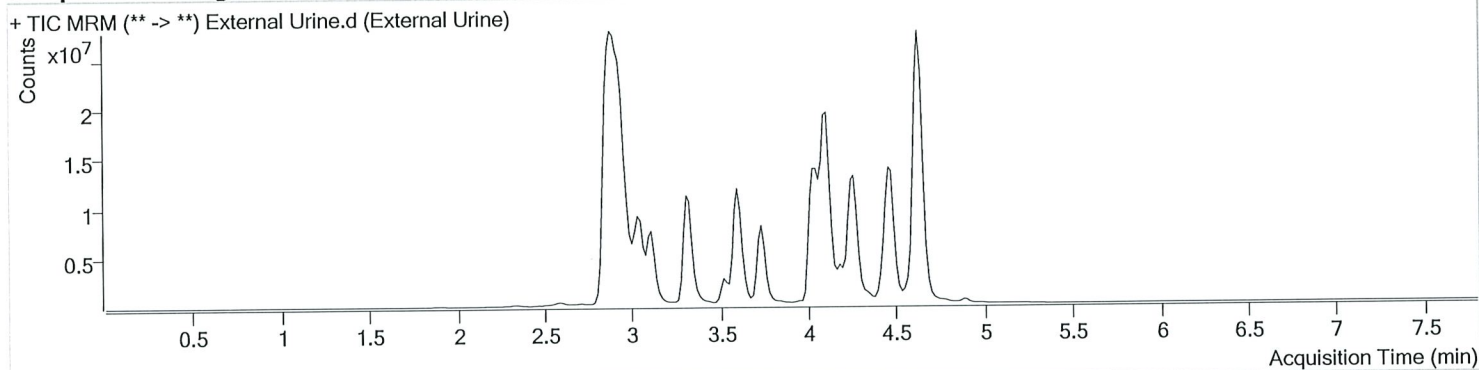


AM #25 Multi-Drug Screen Results

Batch results D:\MassHunter\Data\2020\AM 25-26\090120 AM 25 26 SJ SP\QuantResults\AM 25.batch.bin
Calibration Last Update 9/4/2020 12:41:43 PM

Instrument	Falco	Data File	External Urine.d
Type	Sample	Sample	External Urine
Acq. Method	AM 25 061720.m	Operator	Sarah Pickle
Sample Position	P5-B2	Comment	
Injection Volume	5		
Acq. Date-Time	9/1/2020 7:35:44 PM		
Sample Info.			

Sample Chromatogram



Name	RT	Resp.	S/N	S/N	ISTD Resp.	Calc. Conc.
Alprazolam	4.626	37363751	538.55	∞	30091657	103.3251
Amphetamine	2.875	37966949	1533.66	1175.01	8827033	100.1429
O-desmethyl-tramadol	2.915	56736072	∞	∞	56977209	22.2977

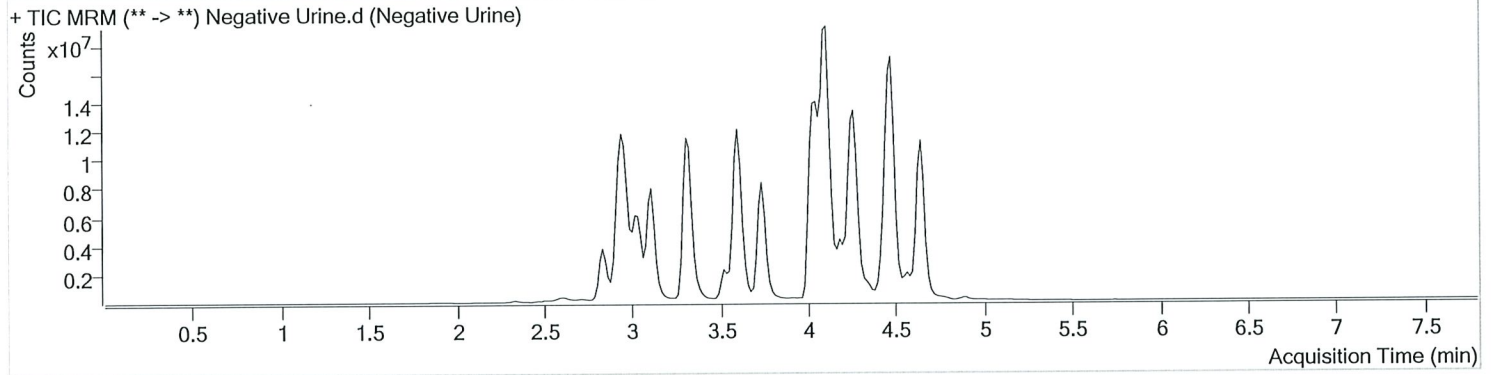
AM #25 Multi-Drug Screen Results



Batch results D:\MassHunter\Data\2020\AM 25-26\090120 AM 25 26 SJ SP\QuantResults\AM 25.batch.bin
Calibration Last Update 9/4/2020 12:41:43 PM

Instrument	Falco	Data File	Negative Urine.d
Type	Sample	Sample	Negative Urine
Acq. Method	AM 25 061720.m	Operator	Sarah Pickle
Sample Position	P5-C2	Comment	
Injection Volume	5		
Acq. Date-Time	9/1/2020 7:52:25 PM		
Sample Info.			

Sample Chromatogram



AM# 26: Screening of THC and Metabolites in Blood and Urine by LC-MS/MS

Extraction Date: 09/01/2020
Plate lot#: IDP-108-2-200303

Analyst: Sarah Pickle
Plate Expiration: 09/03/2020

Mobile phase A: 0.1% Formic Acid in LCMS Water
Blank Blood Lot: Hemostat 445283-4
Blank Urine Lot: POCO31319
LCMS-QQQ ID: 069901

Mobile phase B: 0.1% Formic acid in Acetonitrile
Column: Phenomenex Phenyl Hexyl (4.6x50mm, 2.6um)

Pre-Analytic:

- 1. Check levels of mobile phases and needle wash refill as needed. Ensure waste is not full.
- 2. Ensure correct column is installed and begin mobile phase flow allow to equilibrate ~ 30 minutes.

Analytic:

- 1. Remove standards, plate, controls, and samples from cold storage. Allow to reach room temperature.
- 2. Urine hydrolysis: add 1.5mL urine to blank plate, add 250µl 1N KOH. Shake and incubate at 40 degrees for 15 minutes.
Using a calibrated pipette, add **1000µl blood and urine (if applicable) (calibrated pipette)** into the appropriate wells of analytical (standards) plate. **Pipette ID:** 3382167
- 3. Place on shaking incubator at ambient temp., 900rpm for 15 minutes.
- 4. Pipette **500µL 0.1% formic acid in water blood sample, 500 µL saturated phosphate buffer in urine** in wells of analytical plate.
- 5. Place on shaking incubator at ambient temp., 900rpm for 15 minutes.
- 6. Transfer **700-800µL of blood+acid or urine+acid** mixture to corresponding wells of SLE+ plate.
Amount transferred: 800 uL
- 7. Apply positive pressure for approx. 10-15 seconds (or until no liquid remains on top of sorbent).
(Load at 85-100 PSI- Selector to the right)
- 8. Wait 5 minutes.
- 9. Add **2.25mL MTBE. (Add in 3 increments of 750uL)**
- 10. Wait 5 minutes.
- 11. Apply positive pressure for approx. 15 seconds. *(10-15 PSI- Selector to the left).*
- 12. Add **2.25mL Hexane. (Add in 3 increments of 750uL)**
- 13. Wait 5 minutes.
- 14. Apply positive pressure for approx. 15 seconds. *(10-15 PSI- Selector to the left).*
- 15. Remove plate containing eluate. Place on SPE Dry and evaporate to dryness at approx. 35°C.
- 16. Reconstitute in **100µL 100% MeOH** and heat seal plate with foil. Place in autosampler and run worklist.

Post-Analytic

- 1. Create batch and process data.
- 2. Make any necessary integration changes, Curve weighting of Linear 1/x with r^2 values ≥ 0.98 for each analyte
- 3. RT +/- 3% or 0.100 min, whichever is greater, +/- 20% Accuracy for greater than (+/- 30% for 10ng/ml or less).
- 4. Case sample response for THC and OH-THC 3ng/mL (quantitative), Carboxy-THC: 10ng/mL (qualitative only) will be reported. Samples with a THC or OH-THC response over 50 ng/mL will be reported out as greater than 50 ng/mL.
- 5. Did all QCs pass for each analyte? (if not, describe in comments section)
- 6. Enter QCs into control charting.
- 7. Central File Packet to include: LIMS Worklist, Method Checklist, Calibration and Control Reports

COMMENTS: *Hands of the analyst Sophie Jackson*

SJ
P

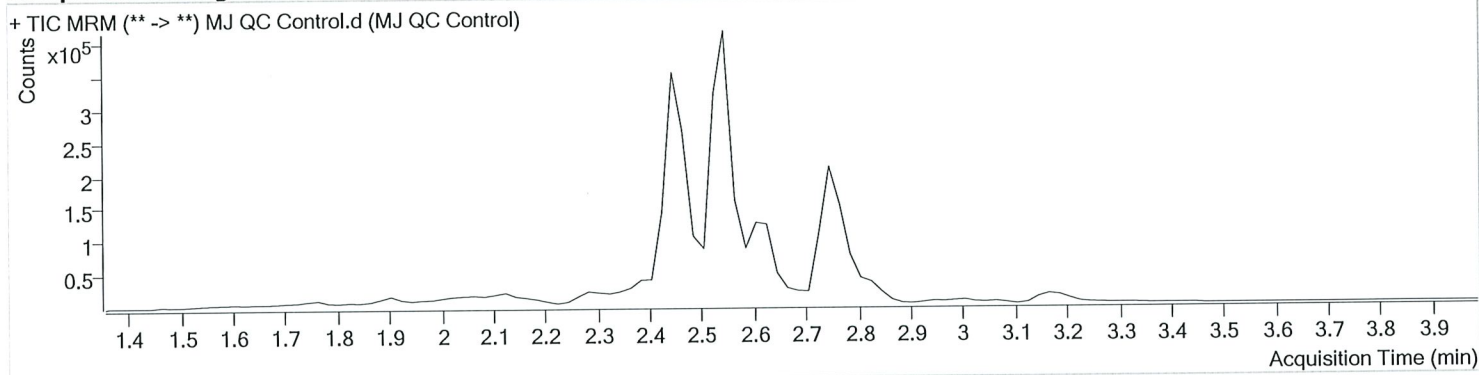


AM #26 Cannabinoids Screen Results

Batch results D:\MassHunter\Data\2020\AM 25-26\090120 AM 25 26 SJ SP\QuantResults\AM 26.batch.bin
Calibration Last Update 9/8/2020 11:13:47 AM

Instrument	Falco	Data File	MJ QC Control.d
Type	Sample	Sample	MJ QC Control
Acq. Method	am 26 test.m	Operator	Sarah Pickle
Sample Position	P3-H1	Comment	
Injection Volume	10		
Acq. Date-Time	9/1/2020 1:43:10 PM		
Sample Info.			

Sample Chromatogram



Name	RT	Resp.	ISTD Resp.	Final Conc.
THC	2.799	2400	59568	4.5383 ng/ml
THC-COOH	2.545	179960	572007	14.7562 ng/ml
THC-OH	2.451	61419	849467	4.1636 ng/ml

SJ
PS

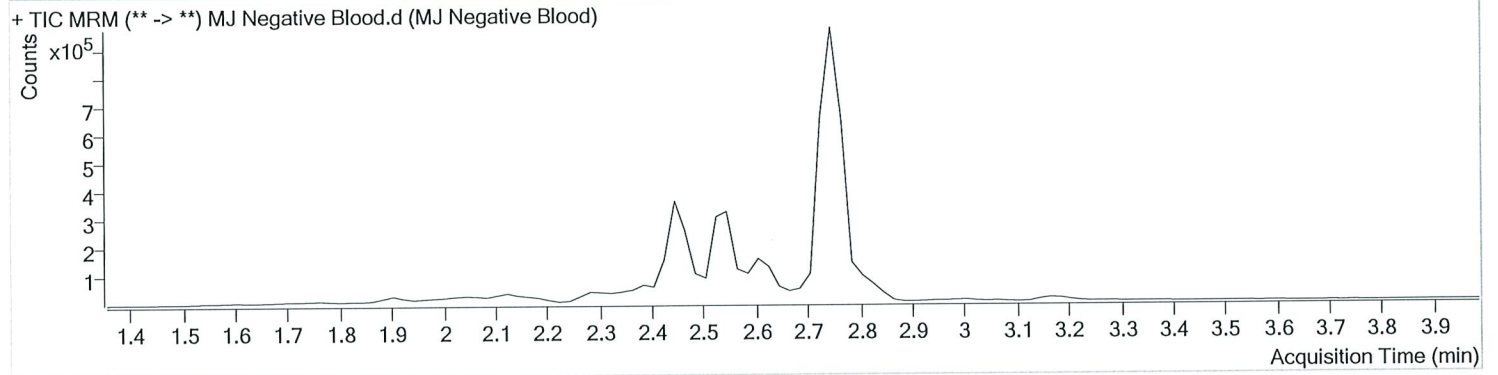


AM #26 Cannabinoids Screen Results

Batch results D:\MassHunter\Data\2020\AM 25-26\090120 AM 25 26 SJ SP\QuantResults\AM 26.batch.bin
Calibration Last Update 9/8/2020 11:13:47 AM

Instrument	Falco	Data File	MJ Negative Blood.d
Type	Sample	Sample	MJ Negative Blood
Acq. Method	am 26 test.m	Operator	Sarah Pickle
Sample Position	P3-A2	Comment	
Injection Volume	10		
Acq. Date-Time	9/1/2020 1:56:12 PM		
Sample Info.			

Sample Chromatogram



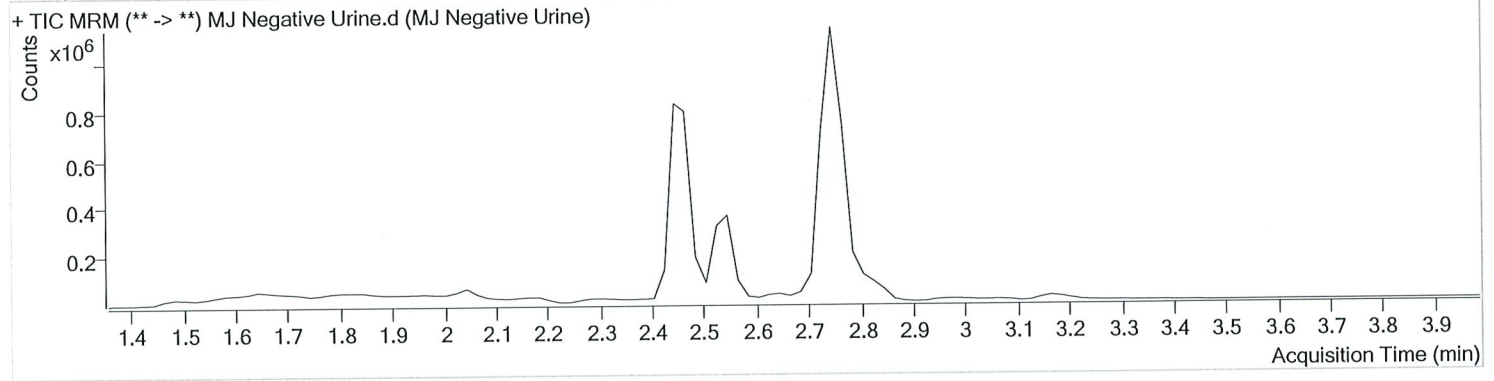


AM #26 Cannabinoids Screen Results

Batch results D:\MassHunter\Data\2020\AM 25-26\090120 AM 25 26 SJ SP\QuantResults\AM 26.batch.bin
Calibration Last Update 9/8/2020 11:13:47 AM

Instrument	Falco	Data File	MJ Negative Urine.d
Type	Sample	Sample	MJ Negative Urine
Acq. Method	am 26 test.m	Operator	Sarah Pickle
Sample Position	P3-C2	Comment	
Injection Volume	10		
Acq. Date-Time	9/1/2020 2:22:22 PM		
Sample Info.			

Sample Chromatogram





Idaho State Police Forensic Services

AM #26 Screening of THC and Metabolites and AM #27 Confirmation of THC and Metabolites Urine External Control Prep Sheet

Methanol External Control Solution (Lot: WS011620)
10 µL of 1mg/mL THC, 100 µL of 100 µg/mL THC-OH, C-THC in 9790 µL MeOH
Approximate concentration 1ug/mL.

Component	Source	Source Lot Number	Expiration Date
Methanol (LCMS)	Fisher	193941	
THC	Cerilliant	FE09101501	11/30/2020
C-THC	Cerilliant	FE07171501	09/30/2020
THC-OH	Cerilliant	FE07221601	07/31/2021
Prepared:	01/16/2020		
Prepared By:	Tamara Salazar		
Expires:	09/30/2020		

090120 9/22/20
Urine External Control Solution (Lot: ~~042220~~ 042220) φ
200 ul of methanol external control solution was added to 9800 ul of urine.
Approximately 20ng/mL each

Component	Source	Source Lot Number
Negative Urine	Pocatello Lab	POC031319
Methanol External Control Solution	-	WS011620
Prepared:	09/01/2020	
Prepared by:	Sarah Pickle	



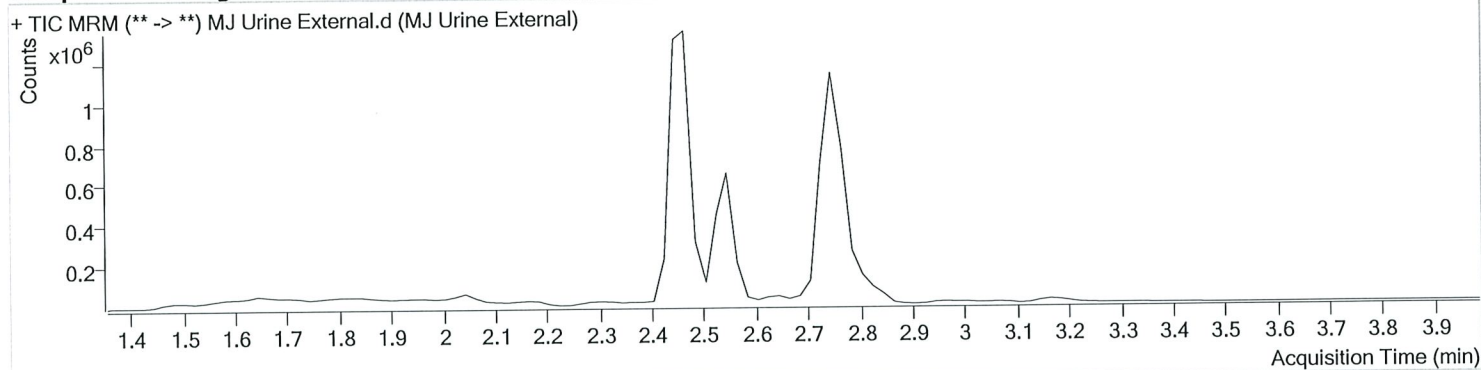
AM #26 Cannabinoids Screen Results

Batch results D:\MassHunter\Data\2020\AM 25-26\090120 AM 25 26 SJ SP\QuantResults\AM 26.batch.bin
Calibration Last Update 9/8/2020 11:13:47 AM

Instrument	Falco	Data File	MJ Urine External.d
Type	Sample	Sample	MJ Urine External
Acq. Method	am 26 test.m	Operator	Sarah Pickle
Sample Position	P3-B2	Comment	
Injection Volume	10		
Acq. Date-Time	9/1/2020 2:09:17 PM		

Sample Info.

Sample Chromatogram

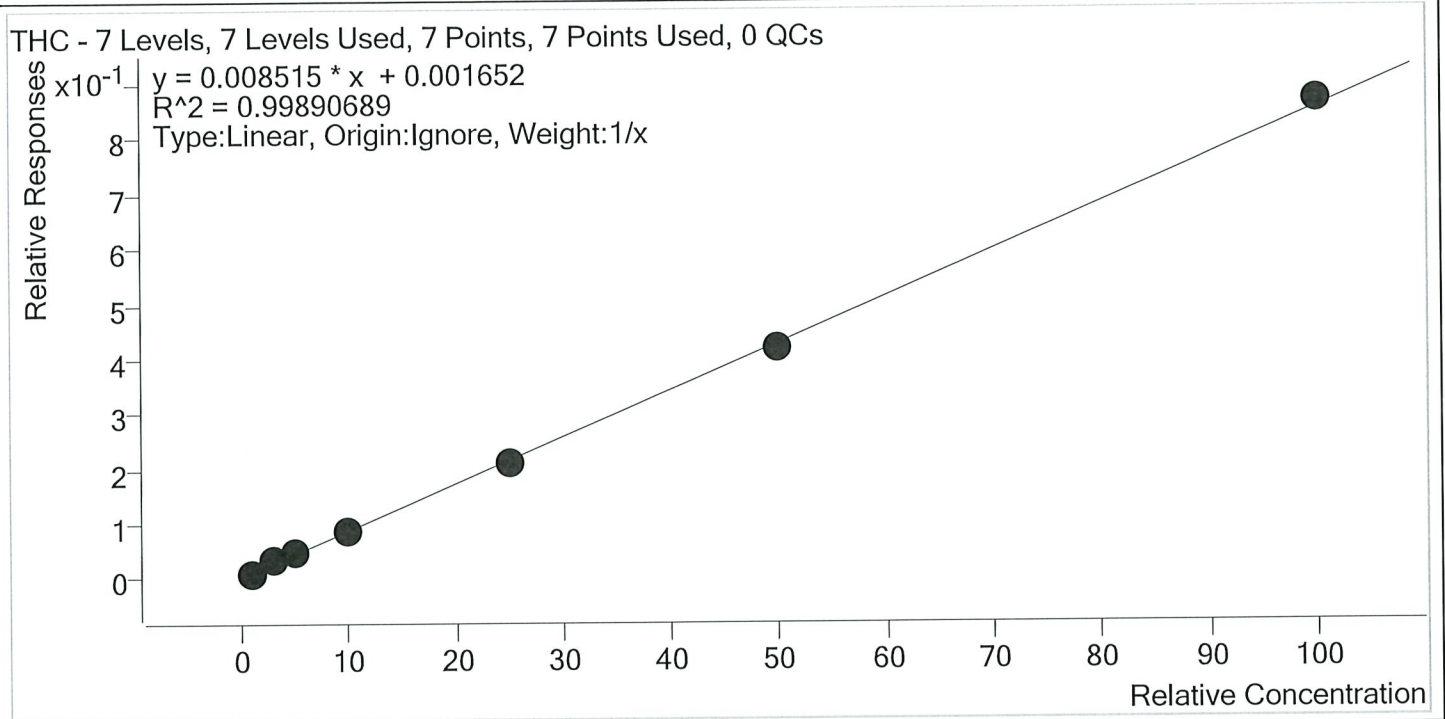


Name	RT	Resp.	ISTD Resp.	Final Conc.
THC	2.799	24858	256148	11.2027 ng/ml
THC-COOH	2.545	306443	986571	14.5765 ng/ml
THC-OH	2.471	658864	3078485	13.2870 ng/ml



AM #26 Cannabinoids Screen Calibration Curve Report

Batch results D:\MassHunter\Data\2020\AM 25-26\090120 AM 25 26 SJ SP\QuantResults\AM 26.batch.bin
Last Cal. Update 9/8/2020 11:13 AM
Analyst Name ISP\datastor
Analyte THC **Internal Standard** THC-D3



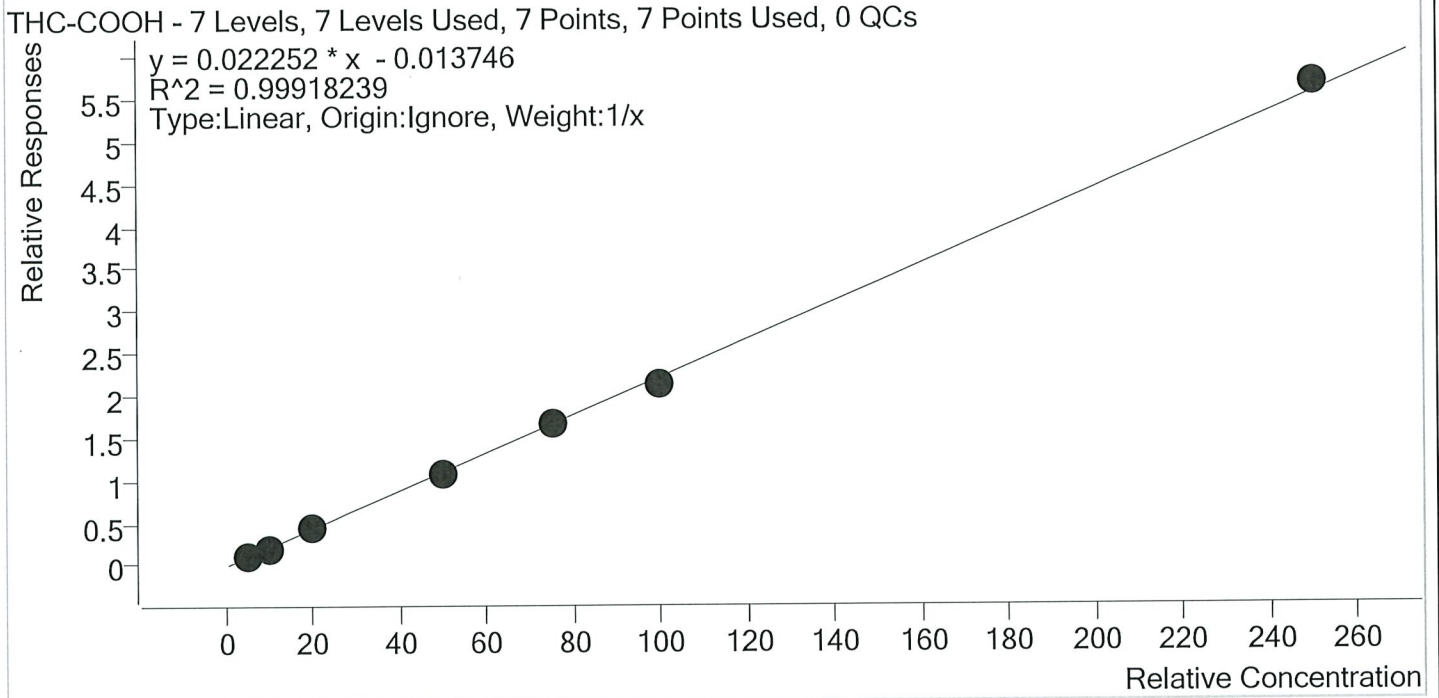
Sample	Level	Enabled	Expected Concentration	Final Concentration	Accuracy
MJ Cal 1	1	✓	1.0	0.9	88.1
MJ Cal 2	2	✓	3.0	3.5	117.3
MJ Cal 3	3	✓	5.0	5.0	100.4
MJ Cal 4	4	✓	10.0	9.7	97.1
MJ Cal 5	5	✓	25.0	24.5	97.9
MJ Cal 6	6	✓	50.0	48.8	97.5
MJ Cal 7	7	✓	100.0	101.6	101.6



ST
R

AM #26 Cannabinoids Screen Calibration Curve Report

Batch results D:\MassHunter\Data\2020\AM 25-26\090120 AM 25 26 SJ SP\QuantResults\AM 26.batch.bin
 Last Cal. Update 9/8/2020 11:13 AM
 Analyst Name ISP\datastor
 Analyte THC-COOH Internal Standard THC-COOH-D9



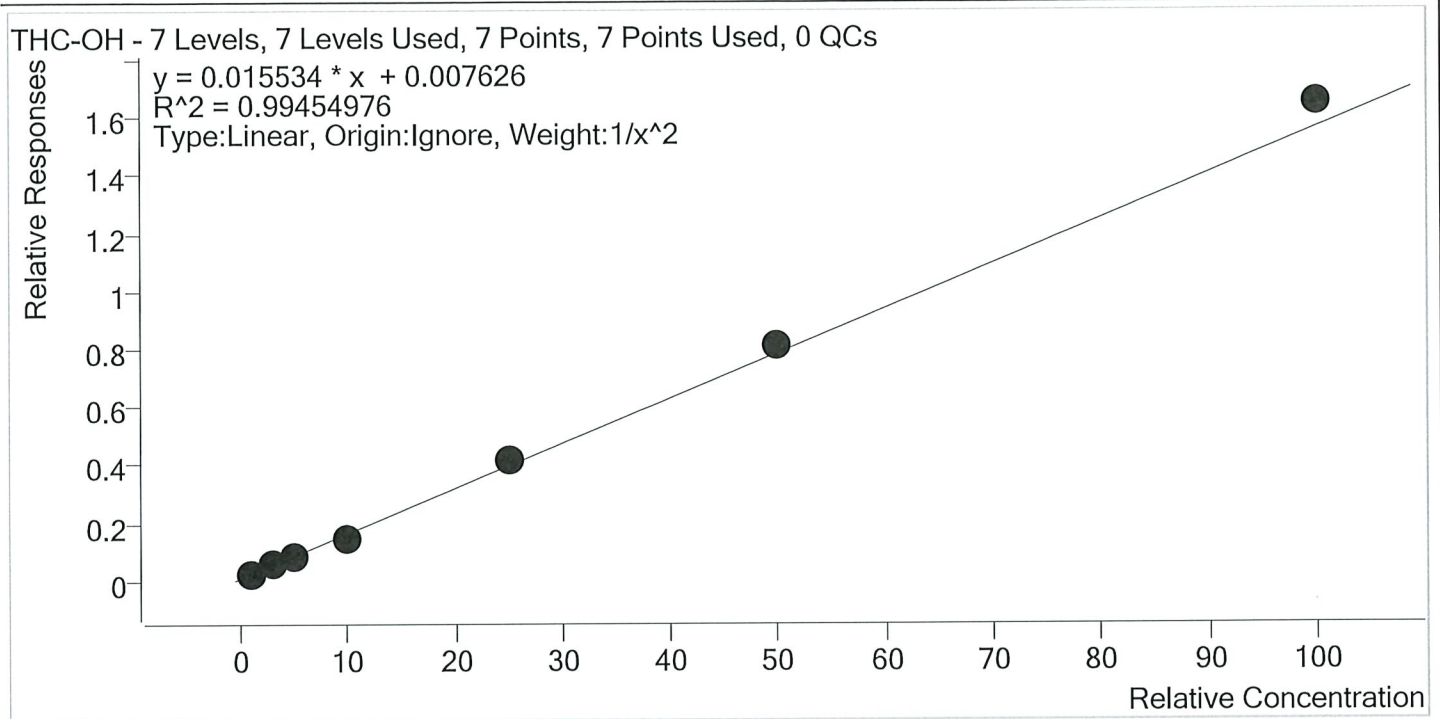
Sample	Level	Enabled	Expected Concentration	Final Concentration	Accuracy
MJ Cal 1	1	✓	5.0	5.4	108.9
MJ Cal 2	2	✓	10.0	9.9	98.6
MJ Cal 3	3	✓	20.0	19.4	97.2
MJ Cal 4	4	✓	50.0	48.3	96.6
MJ Cal 5	5	✓	75.0	74.6	99.5
MJ Cal 6	6	✓	100.0	97.0	97.0
MJ Cal 7	7	✓	250.0	255.3	102.1

ST
D



AM #26 Cannabinoids Screen Calibration Curve Report

Batch results D:\MassHunter\Data\2020\AM 25-26\090120 AM 25 26 SJ SP\QuantResults\AM 26.batch.bin
 Last Cal. Update 9/8/2020 11:13 AM
 Analyst Name ISP\datastor
 Analyte THC-OH Internal Standard THC-OH-D3



Sample	Level	Enabled	Expected Concentration	Final Concentration	Accuracy
MJ Cal 1	1	✓	1.0	1.0	102.1
MJ Cal 2	2	✓	3.0	3.0	100.4
MJ Cal 3	3	✓	5.0	4.6	92.1
MJ Cal 4	4	✓	10.0	9.0	90.1
MJ Cal 5	5	✓	25.0	26.5	105.9
MJ Cal 6	6	✓	50.0	51.9	103.8
MJ Cal 7	7	✓	100.0	105.7	105.7

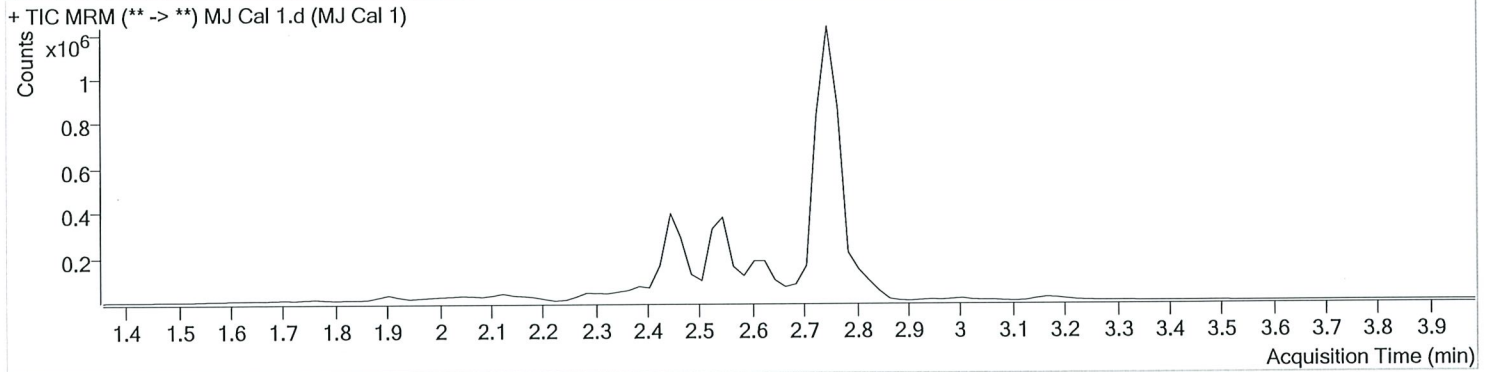


AM #26 Cannabinoids Screen Results

Batch results D:\MassHunter\Data\2020\AM 25-26\090120 AM 25 26 SJ SP\QuantResults\AM 26.batch.bin
Calibration Last Update 9/8/2020 11:13:47 AM

Instrument	Falco	Data File	MJ Cal 1.d
Type	Cal	Sample	MJ Cal 1
Acq. Method	am 26 test.m	Operator	Sarah Pickle
Sample Position	P3-A1	Comment	
Injection Volume	10		
Acq. Date-Time	9/1/2020 12:57:25 PM		
Sample Info.			

Sample Chromatogram



Name	RT	Resp.	ISTD Resp.	Final Conc.	
THC	2.819	1326	144875	0.8811 ng/ml	Low
THC-COOH	2.545	70847	659386	5.4461 ng/ml	
THC-OH	2.451	23108	984062	1.0208 ng/ml	Low

SJ

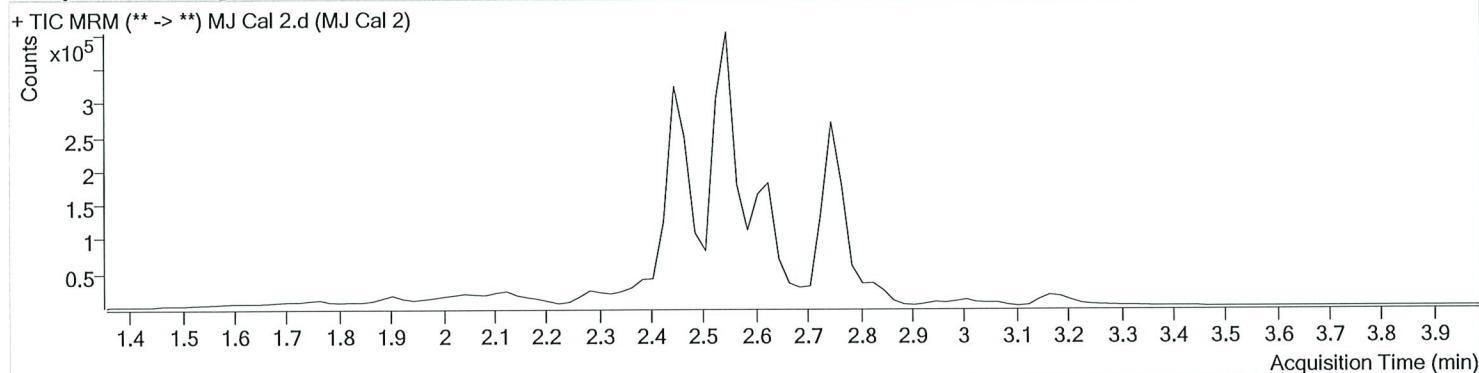


AM #26 Cannabinoids Screen Results

Batch results D:\MassHunter\Data\2020\AM 25-26\090120 AM 25 26 SJ SP\QuantResults\AM 26.batch.bin
Calibration Last Update 9/8/2020 11:13:47 AM

Instrument	Falco	Data File	MJ Cal 2.d
Type	Cal	Sample	MJ Cal 2
Acq. Method	am 26 test.m	Operator	Sarah Pickle
Sample Position	P3-B1	Comment	
Injection Volume	10		
Acq. Date-Time	9/1/2020 1:04:06 PM		
Sample Info.			

Sample Chromatogram



Name	RT	Resp.	ISTD Resp.	Final Conc.
THC	2.799	1246	39411	3.5195 ng/ml
THC-COOH	2.545	130381	633745	9.8631 ng/ml
THC-OH	2.451	39249	721321	3.0120 ng/ml

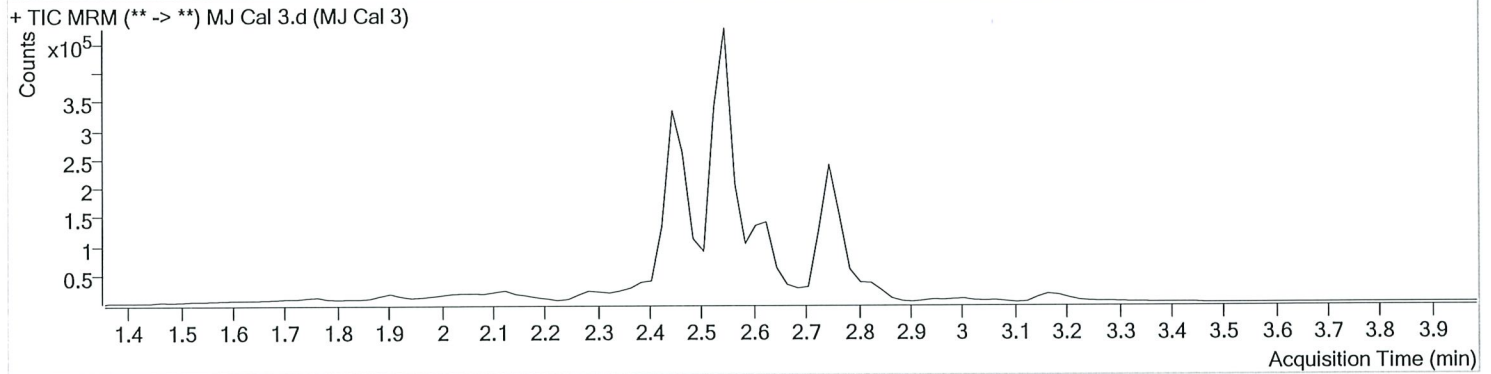
AM #26 Cannabinoids Screen Results



Batch results D:\MassHunter\Data\2020\AM 25-26\090120 AM 25 26 SJ SP\QuantResults\AM 26.batch.bin
Calibration Last Update 9/8/2020 11:13:47 AM

Instrument	Falco	Data File	MJ Cal 3.d
Type	Cal	Sample	MJ Cal 3
Acq. Method	am 26 test.m	Operator	Sarah Pickle
Sample Position	P3-C1	Comment	
Injection Volume	10		
Acq. Date-Time	9/1/2020 1:10:36 PM		
Sample Info.			

Sample Chromatogram



Name	RT	Resp.	ISTD Resp.	Final Conc.
THC	2.799	1678	37796	5.0203 ng/ml
THC-COOH	2.545	253063	604445	19.4325 ng/ml
THC-OH	2.451	64867	819813	4.6028 ng/ml

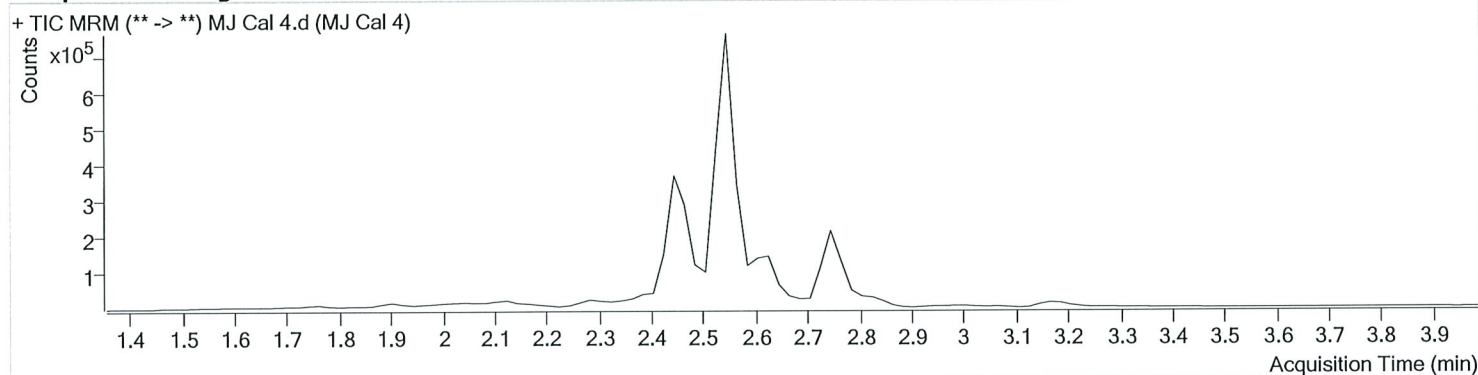


AM #26 Cannabinoids Screen Results

Batch results D:\MassHunter\Data\2020\AM 25-26\090120 AM 25 26 SJ SP\QuantResults\AM 26.batch.bin
Calibration Last Update 9/8/2020 11:13:47 AM

Instrument	Falco	Data File	MJ Cal 4.d
Type	Cal	Sample	MJ Cal 4
Acq. Method	am 26 test.m	Operator	Sarah Pickle
Sample Position	P3-D1	Comment	
Injection Volume	10		
Acq. Date-Time	9/1/2020 1:17:08 PM		
Sample Info.			

Sample Chromatogram



Name	RT	Resp.	ISTD Resp.	Final Conc.
THC	2.799	3032	35937	9.7137 ng/ml
THC-COOH	2.545	650249	612634	48.3162 ng/ml
THC-OH	2.451	125941	853314	9.0104 ng/ml

SP
P

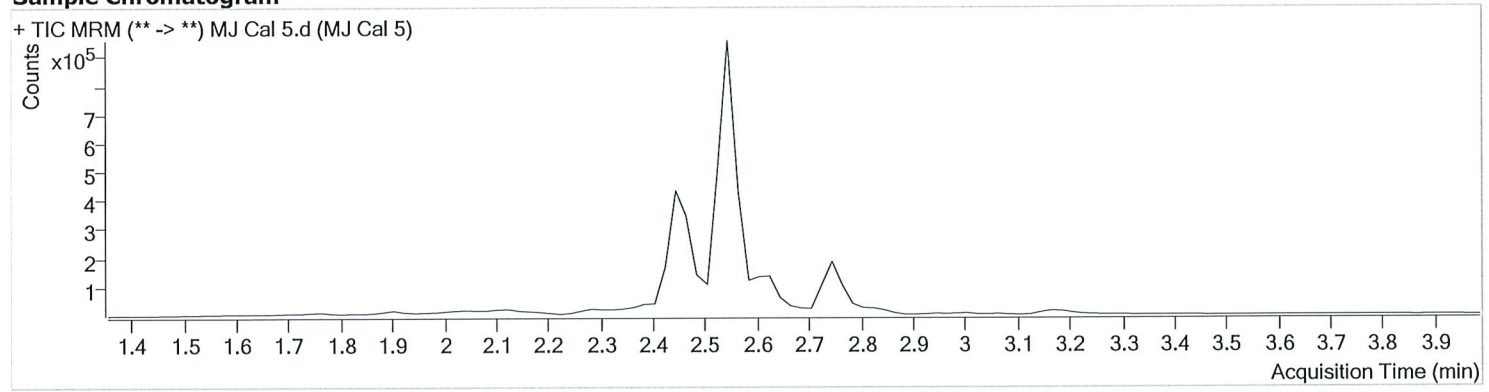


AM #26 Cannabinoids Screen Results

Batch results D:\MassHunter\Data\2020\AM 25-26\090120 AM 25 26 SJ SP\QuantResults\AM 26.batch.bin
Calibration Last Update 9/8/2020 11:13:47 AM

Instrument	Falco	Data File	MJ Cal 5.d
Type	Cal	Sample	MJ Cal 5
Acq. Method	am 26 test.m	Operator	Sarah Pickle
Sample Position	P3-E1	Comment	
Injection Volume	10		
Acq. Date-Time	9/1/2020 1:23:39 PM		
Sample Info.			

Sample Chromatogram



Name	RT	Resp.	ISTD Resp.	Final Conc.
THC	2.799	5680	27049	24.4660 ng/ml
THC-COOH	2.545	958609	582014	74.6352 ng/ml
THC-OH	2.451	344210	821695	26.4764 ng/ml

W
D

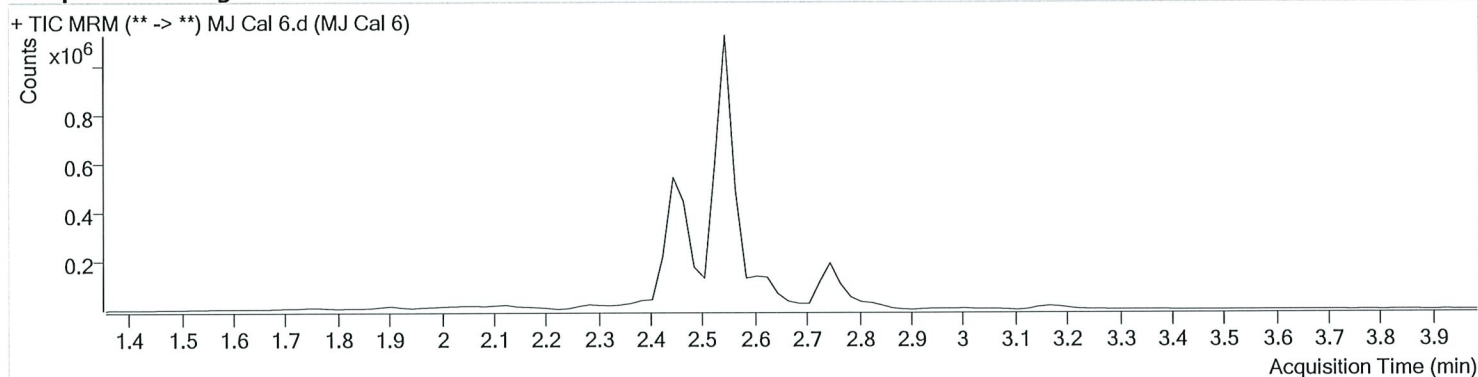


AM #26 Cannabinoids Screen Results

Batch results D:\MassHunter\Data\2020\AM 25-26\090120 AM 25 26 SJ SP\QuantResults\AM 26.batch.bin
Calibration Last Update 9/8/2020 11:13:47 AM

Instrument	Falco	Data File	MJ Cal 6.d
Type	Cal	Sample	MJ Cal 6
Acq. Method	am 26 test.m	Operator	Sarah Pickle
Sample Position	P3-F1	Comment	
Injection Volume	10		
Acq. Date-Time	9/1/2020 1:30:09 PM		
Sample Info.			

Sample Chromatogram



Name	RT	Resp.	ISTD Resp.	Final Conc.
THC	2.799	14054	33711	48.7669 ng/ml
THC-COOH	2.545	1225765	571381	97.0246 ng/ml
THC-OH	2.451	663441	815330	51.8925 ng/ml

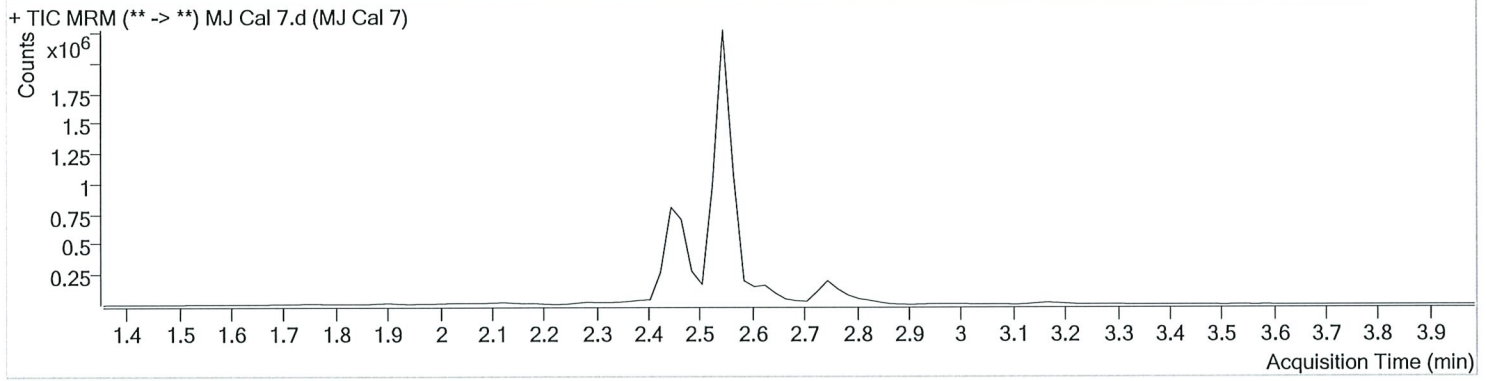


AM #26 Cannabinoids Screen Results

Batch results D:\MassHunter\Data\2020\AM 25-26\090120 AM 25 26 SJ SP\QuantResults\AM 26.batch.bin
Calibration Last Update 9/8/2020 11:13:47 AM

Instrument	Falco	Data File	MJ Cal 7.d
Type	Cal	Sample	MJ Cal 7
Acq. Method	am 26 test.m	Operator	Sarah Pickle
Sample Position	P3-G1	Comment	
Injection Volume	10		
Acq. Date-Time	9/1/2020 1:36:40 PM		
Sample Info.			

Sample Chromatogram



Name	RT	Resp.	ISTD Resp.	Final Conc.
THC	2.799	37252	42963	101.6325 ng/ml
THC-COOH	2.545	2911594	513793	255.2823 ng/ml
THC-OH	2.451	1358552	823796	105.6741 ng/ml